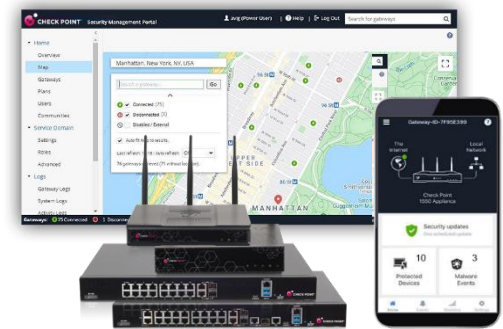


## QUANTUM SPARK™ 1600, 1800 SECURITY GATEWAYS



Secure. Simple. Complete.

Check Point Quantum Spark security gateways are high performance, integrated devices offering firewall, VPN, antivirus, application visibility and control, URL filtering, email security and SandBlast Zero-Day Protection, all in compact form factors that are simple to configure and manage.



### Quantum Spark – Full Protection for Small and Midsize Businesses



Protection from  
Every Threat



Easy to Deploy  
and Manage



All-in-One  
Solution

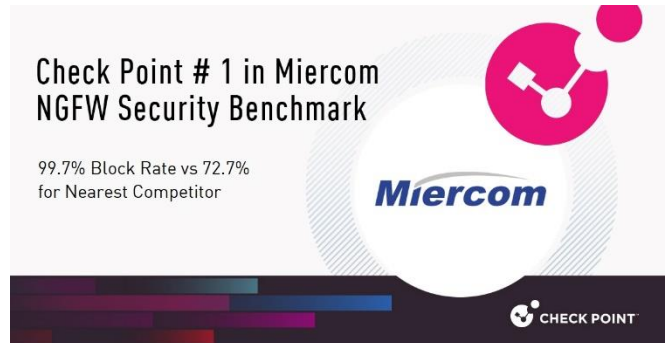
## SPOTLIGHT

### Advanced security, uncompromising performance

The Check Point Quantum Spark 1600 and 1800 security gateways deliver enterprise-grade security in simple, affordable, all-in-one security solutions in a 1 Rack Unit (RU) form factor to protect small to mid-size business employees, networks, and data from cyber-theft. High threat prevention throughput and high port capacity with 2.5 and 10 GbE network interfaces in the 1800 make these NGFWs ideal for larger branch and SMB networks.

#### Comprehensive, Industry-Leading Security

- ❖ Next Generation Firewall
- ❖ Site-to-Site, Remote Access VPN
- ❖ Application Control and Web Filtering
- ❖ Intrusion Prevention
- ❖ Antivirus and Anti-Bot
- ❖ Anti-Spam Email Security
- ❖ SandBlast Threat Emulation (sandboxing)



#### Part of the Quantum Cyber Security Family

R81 software for SMB increases performance and brings enterprise-grade security to small and medium size businesses. Centrally managed SMB gateways support:

- Unified access policy: firewall, application control, URLF
- Policy layers and sub-policies
- Acceleration of domain, dynamic and time objects
- Multicore VPN and VPN acceleration
  - Smart Accel 30% performance improvement of low risk, high bandwidth apps

#### 1/2.5/5/10 GbE Network Connectivity

The 1600 has 1GbE copper or fiber options for the WAN and DMZ.

The 1800 has a 1GbE Management port, 2.5GbE options for the LAN and a 10GbE copper or fiber option for the DMZ.

	1600	1800
LAN	16x 1GbE copper	16x 1GbE copper plus 2x 2.5GbE copper
DMZ	1x 1GbE copper/fiber	1x 10GbE copper/fiber
WAN	1x 1GbE copper/fiber	2x 1GbE copper/fiber
MGMT		1x 1GbE copper



**1800 Port Configuration**

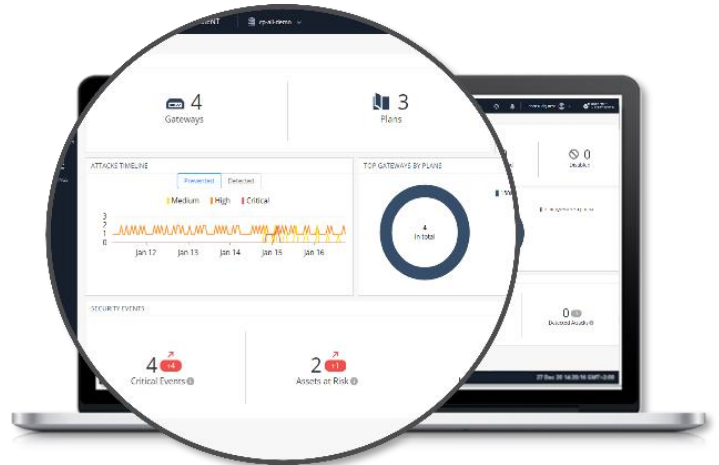
## SPOTLIGHT

### Lower the complexity of managing your security

Check Point Quantum Spark management is designed to increase scalability, improve operational efficiency, and reduce the over all cost for your business. With Zero Touch deployment and pre-defined security policies, your business is secured in minutes. Manage security locally via a Web interface or scale management with a cloud-based Check Point Security Management service. A mobile management app enables real-time access to immediately remediate threats on the go.

#### Cloud Management

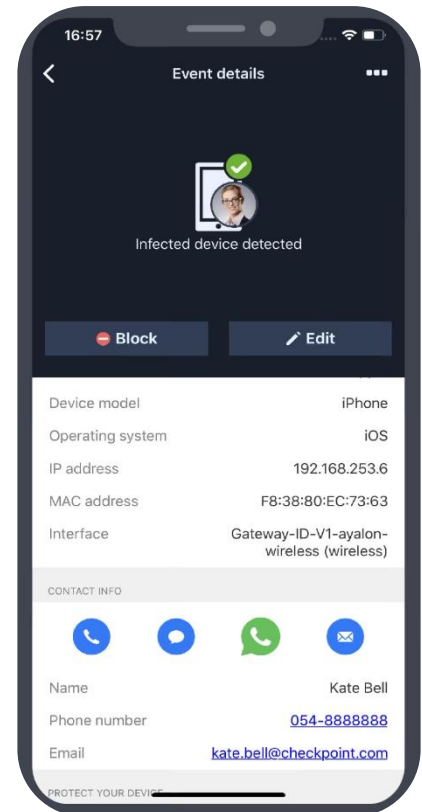
Quantum Spark cloud management enables service providers to provision security efficiently across all Check Point products and services from the Infinity Portal. Unified logs and dashboards enables Managed Service Providers to manage hundreds of thousands of Quantum Spark firewalls for their small and medium business customers so they can focus on growing their own business.



#### Security Management App

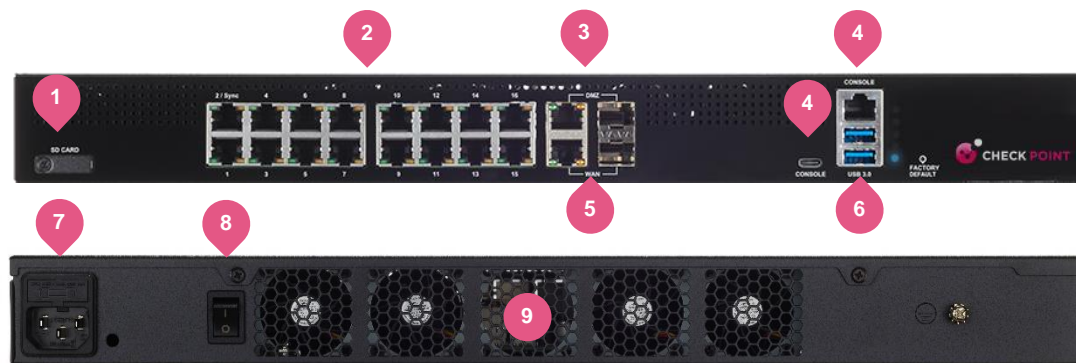
The intuitive mobile app provides real-time monitoring of network events, alerts you when your network is at risk, enables you to quickly block security threats, and configure the security policy for multiple gateways.

- **Network security snapshot:** view connected devices and any threats
- **Real-time security alerts:** highlights attacks and unauthorized devices
- **On-the-spot threat mitigation:** quickly block infected devices
- **Network statistic reports and charts:** gain insights on network usage patterns
- **Manage multiple gateways:** manage security in the palm of your hand



## 1600 Security Gateway

1. SD card slot
2. 16x 1GbE LAN switch
3. 1x 1GbE copper/fiber DMZ port
4. Console port
5. 1x 1GbE copper/fiber WAN port
6. USB ports
7. 1x power supply
8. Power on/off switch
9. Fans



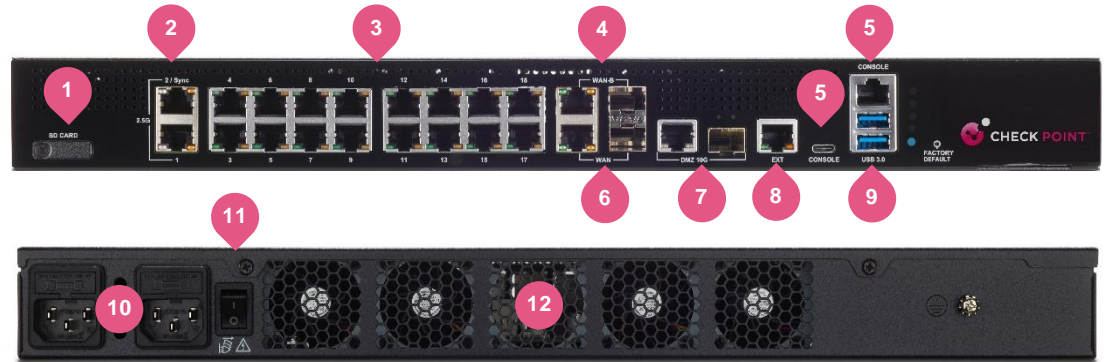
1600	
<b>Enterprise Testing Conditions</b>	
Threat Prevention with Smart Accel*	2,000 Mbps
Threat Prevention <sup>1</sup>	1,500 Mbps
Next Generation Firewall <sup>2</sup>	3,200 Mbps
IPS Throughput	3,500 Mbps
Firewall Throughput	4,800 Mbps
<b>RFC 3511, 2544, 2647, 1242 Performance (LAB)</b>	
Firewall 1518 Byte UDP Packets	8,000 Mbps
VPN AES-128 Throughput	3,200 Mbps
Connections per Second	55,000
Concurrent Connections	2,400,000
<b>Software</b>	
Security	Firewall, VPN, User Aware, QoS, Application Control, URLF, IPS, Anti-Bot, Antivirus, Anti-Spam, sandboxing
Unicast, Multicast Routing and Clustering	OSPFv2, BGPv4 and 4++, RIP, PIM (SM, DM, SSM), IGMP, ClusterXL High Availability
IPv6	local network and internet connections, dual stack tunneling IPv4 over IPv6 networks, prefix delegation
Mobile Access License (Users)	500 remote SNX or Mobile VPN client users
<b>Hardware</b>	
WAN Port	1x 10/100/1000Base-T RJ-45 / 1000BaseF SFP port (transceiver not included)
DMZ Port	1x 10/100/1000Base-T RJ-45 / 1000BaseF SFP port (transceiver not included)
LAN Switch Ports	16x 10/100/1000Base-T RJ-45 ports
Console, USB Ports	Console:1x USB-C and 1x RJ-45 console port, USB:2x USB 3.0 ports
Storage	Micro-SD card slot with 32 and 64 GB card options
eMMC	32 GB
MTBF	22.26 years @ 25°C
<b>Dimensions</b>	
Dimensions (W x D x H)	1RU form factor: 430 x 300 x 44.2 mm (16.93 x 11.8 x 1.74 in.)
Weight	6.17 kg (13.6 lbs.)
<b>Environment</b>	
Operating / Storage	0°C ~ 40°C / -45°C ~ 60°C (5~95%, non-condensing)
<b>Power Requirements</b>	
AC Input	100 – 240VAC, 50 – 60 Hz
Power Supplies	single 150W power supply
Power Consumption (Max)	71.6W
Heat Dissipation (BTU/hr)	244.31
<b>Certifications</b>	
Safety   Emissions   Environment	UL/c-UL 62368-1 , IEC 62368-1 CB / EMC, EMI EN55024, EN55032 Class B, VCCI, AS, NZS CISPR 32, IC ICES 03, FCC: Part 15 Class B / RoHS, REACH, WEEE

1. Includes Firewall, Application Control, URL Filtering, IPS, Antivirus, Anti-Bot, SandBlast Zero-Day Protection with logging. 2. Includes Firewall, Application Control, IPS with logging.

\* Smart Accel is available on release R81.10 and above. Smart Accel must be enabled on Web UI and is currently supported on devices managed via Web UI or SMP

## 1800 Security Gateway

1. SD card slot
2. 2x 2.5GbE ports
3. 16x 1GbE LAN switch
4. 1x 1GbE copper/fiber WAN2 (\*future)
5. Console port
6. 1x 1GbE copper/fiber WAN1 port
7. 1x 10GbE copper/fiber DMZ port
8. 1x 1GbE Management port (\*future)
9. 2x USB ports
10. 2x power supplies
11. Power on/off switch
12. Fans



	1800
<b>Enterprise Testing Conditions</b>	
Threat Prevention with Smart Accel*	2,600 Mbps
Threat Prevention <sup>1</sup>	2,000 Mbps
Next Generation Firewall <sup>2</sup>	5,000 Mbps
IPS Throughput	5,500 Mbps
Firewall Throughput	7,500 Mbps
<b>RFC 3511, 2544, 2647, 1242 Performance (LAB)</b>	
Firewall 1518 Byte UDP Packets	17,000 Mbps
VPN AES-128 Throughput	4,000 Mbps
Connections per Second	66,000
Concurrent Connections	2,400,000
<b>Software</b>	
Security	Firewall, VPN, User Aware, QoS, Application Control, URLF, IPS, Anti-Bot, Antivirus, Anti-Spam, sandboxing
Unicast, Multicast Routing and Clustering	OSPFv2, BGPv4 and 4++, RIP, PIM (SM, DM, SSM), IGMP, ClusterXL High Availability
IPv6	local network and internet connections, dual stack tunneling IPv4 over IPv6 networks, prefix delegation
Mobile Access License (Users)	500 remote SNX or Mobile VPN client users
<b>Hardware</b>	
WAN Ports	2x 10/100/1000Base-T RJ-45 / 1000BaseF SFP ports (transceiver not included) *WAN2 support in future SW release
DMZ Port	1x 10GbE Base-T RJ-45 / 10GbE SFP+ (transceiver not included)
LAN Switch Ports	2x 2.5GbE Base-T RJ-45 plus 16x 10/100/1000Base-T RJ-45 ports
Management Port	1x 10/100/1000Base-T RJ-45 port *MGMT support in future SW release
Console. USB Ports	Console: 1x USB-C and 1x RJ-45 console port, USB: 2x USB 3.0 ports
Storage	256 GB SSD and Micro-SD slot with 32 and 64 GB card options
eMMC	32 GB
MTBF	15.64 years @ 25°C
<b>Dimensions</b>	
Dimensions (W x D x H)	1RU form factor: 430 x 300 x 44.2 mm (16.93 x 11.8 x 1.74 in.)
Weight	6.76 kg (14.9 lbs.)
<b>Environment</b>	
Operating / Storage	0°C ~ 40°C / -45°C ~ 60°C (5~95%, non-condensing)
<b>Power Requirements</b>	
AC Input	100 – 240VAC, 50 – 60 Hz
Power Supplies	two redundant 150W power supplies
Power Consumption (Max)	93.6W
Heat Dissipation (BTU/hr)	319.3
<b>Certifications</b>	
Safety   Emissions   Environment	UL/c-UL 62368-1 , IEC 62368-1 CB / EMC, EMI EN55024, EN55032 Class B, VCCI, AS, NZS CISPR 32, IC ICES 03, FCC: Part 15 Class B / RoHS, REACH, WEEE

1. Includes Firewall, Application Control, URL Filtering, IPS, Antivirus, Anti-Bot, SandBlast Zero-Day Protection with logging. 2. Includes Firewall, Application Control, IPS with logging.



## ORDERING QUANTUM SPARK 1600, 1800

SECURITY GATEWAYS <sup>1</sup>	
1600 Security Gateway	CPAP-SG1600-SNBT
1800 Security Gateway	CPAP-SG1800-SNBT

ACCESSORIES	
SFP Short range transceiver (for the DMZ/WAN 1000Base-F ports)	CPAC-1500-TR-1SX
SFP Long range transceiver (for the DMZ/WAN 1000Base-F ports)	CPAC-1500-TR-1LX
SFP+ Short range transceiver (for 1800 DMZ 10GBase-F port)	CPAC-1800-TR-10SR
SFP+ Long range transceiver (for 1800 DMZ 10GBase-F port)	CPAC-1800-TR-10LR
SD memory card 32 GB	CPAC-1500-32GB-SD
SD memory card 64 GB	CPAC-1500-64GB-SD

ADDITIONAL SOFTWARE BLADES <sup>2</sup>	
Mobile Access Blade for 50 concurrent connections	CPSB-MOB-50
Quantum IoT Protect for 1 year	CPSB-IOTP-1600-1Y
Quantum IoT Protect for 1 year	CPSB-IOTP-1800-1Y
Quantum SD-WAN for 1 year for 1600 Firewall	CPSB-SDWAN-1600-1Y
Quantum SD-WAN for 1 year for 1800 Firewall	CPSB-SDWAN-1800-1Y

<sup>1</sup> Add a NGFW, NGTP or NGTX subscription. Promotion bundles for 3 and 5 years include the security gateway, support and subscription package (see below). License includes support for SMP cloud management. <sup>2</sup> Concurrent remote SNX or Mobile VPN client users. The MOB license is additive. The full Mobile Access web portal functionality is not supported.

## 3 and 5 Year Security Gateway, Support and Services Bundles

	NGFW	NGTP	SNBT
Security Gateway	✓	✓	✓
Premium Support (24 x 7 response, software upgrades and more)	✓	✓	✓
PRO Support option (proactive health monitoring service)	✓	✓	✓
Firewall	✓	✓	✓
VPN	✓	✓	✓
Mobile Access (includes 500 concurrent users)	✓	✓	✓
Application Control	✓	✓	✓
Intrusion Prevention System	✓	✓	✓
URL Filtering		✓	✓
Antivirus and Anti-Bot		✓	✓
Anti-Spam and Email Security		✓	✓
DNS Security		✓	✓
Threat Emulation (sandboxing)			✓
IoT Network protection for SMBs*			✓
SD-WAN network optimization for SMBs*	✓	✓	✓
IoT network protection for enterprises**	Optional	Optional	Optional
SD-WAN network optimization for enterprises**	Optional	Optional	Optional

Optional security capabilities can be ordered a-la-carte or separately

\* Starting from release R81.10.10. and supported on Web UI and Spark Management only

\*\* Supported on Smart-1 only